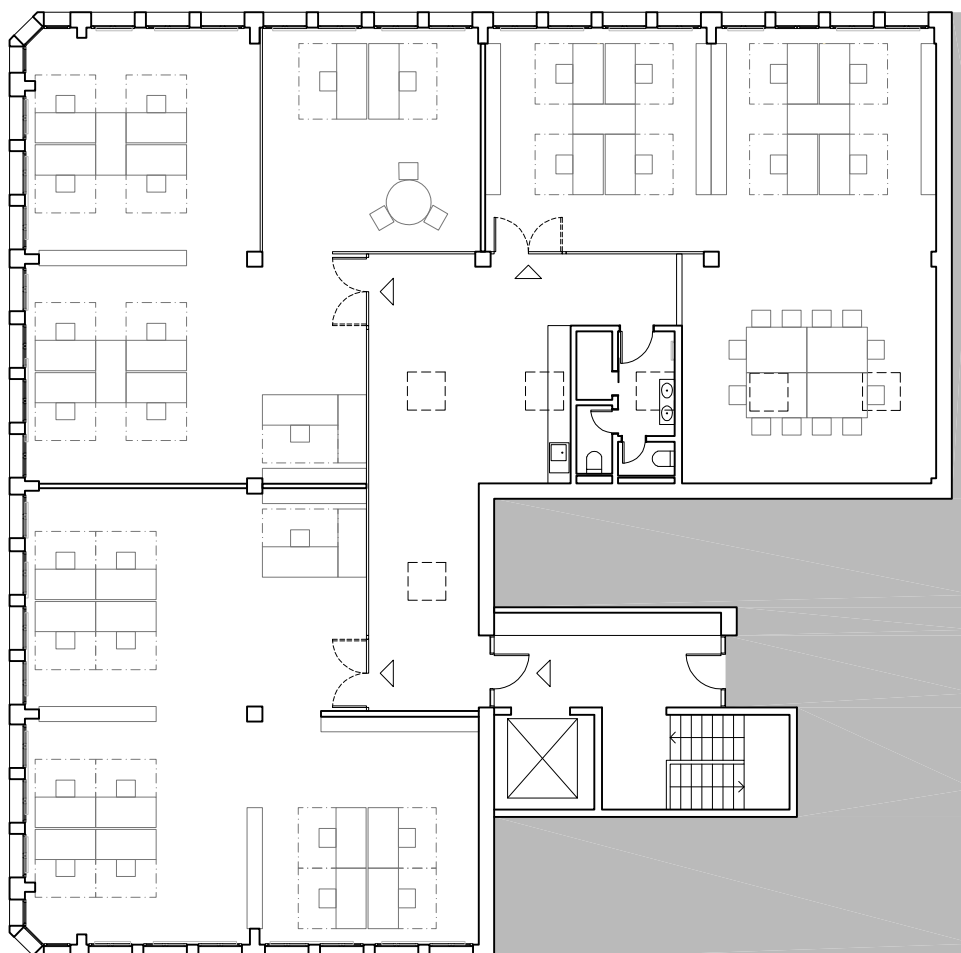
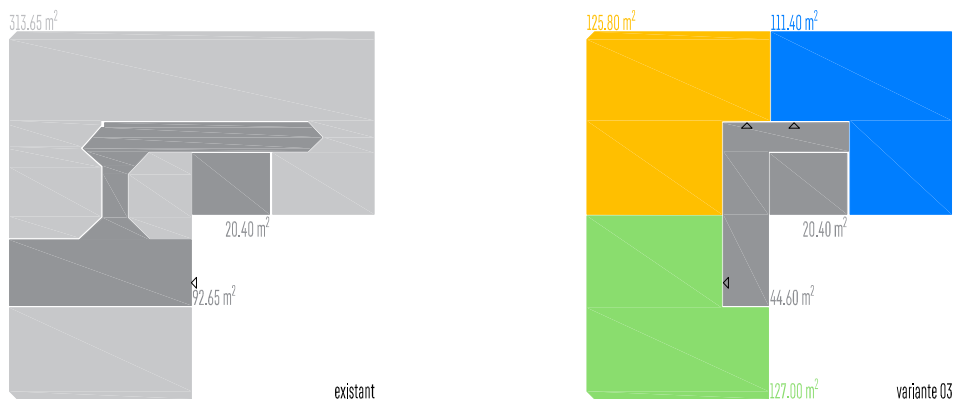


# Aménagement des bureaux \_ Rue du Puits-Godet 22



- variante 03
- wc + cuisinette communs
  - 3 bureaux surface similaire
  - espaces ouverts

Plan niveau 3 \_ variante 03

891\_AP\_P3\_v03\_a

Echelle 1/200

Date	Dessin	RP	Format	Impression	Niveau
18.08.2020	tc	caf	A4	18/08/20	Niveau = 0.00 = altitude 647 msm

